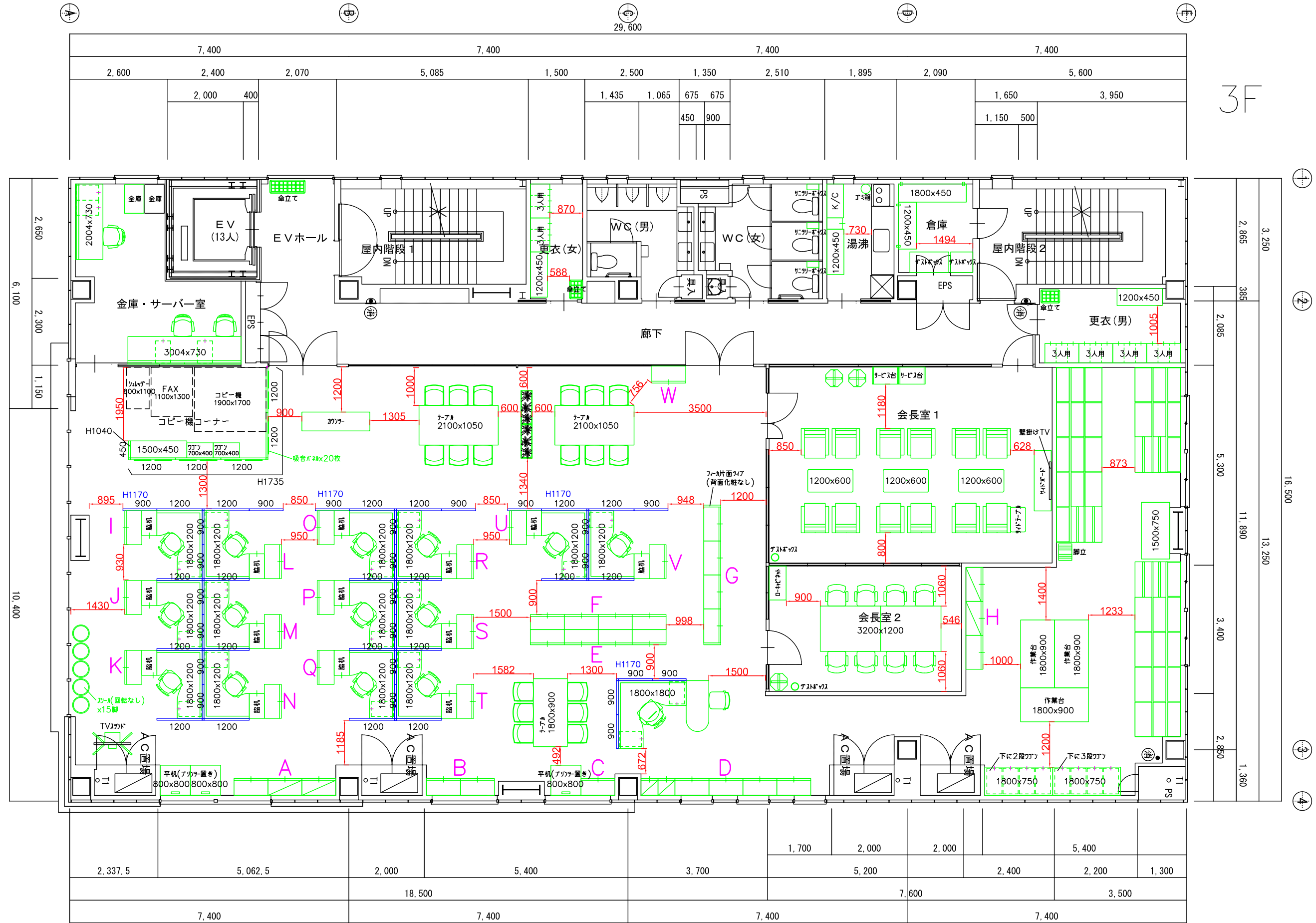


1階平面図・



2F

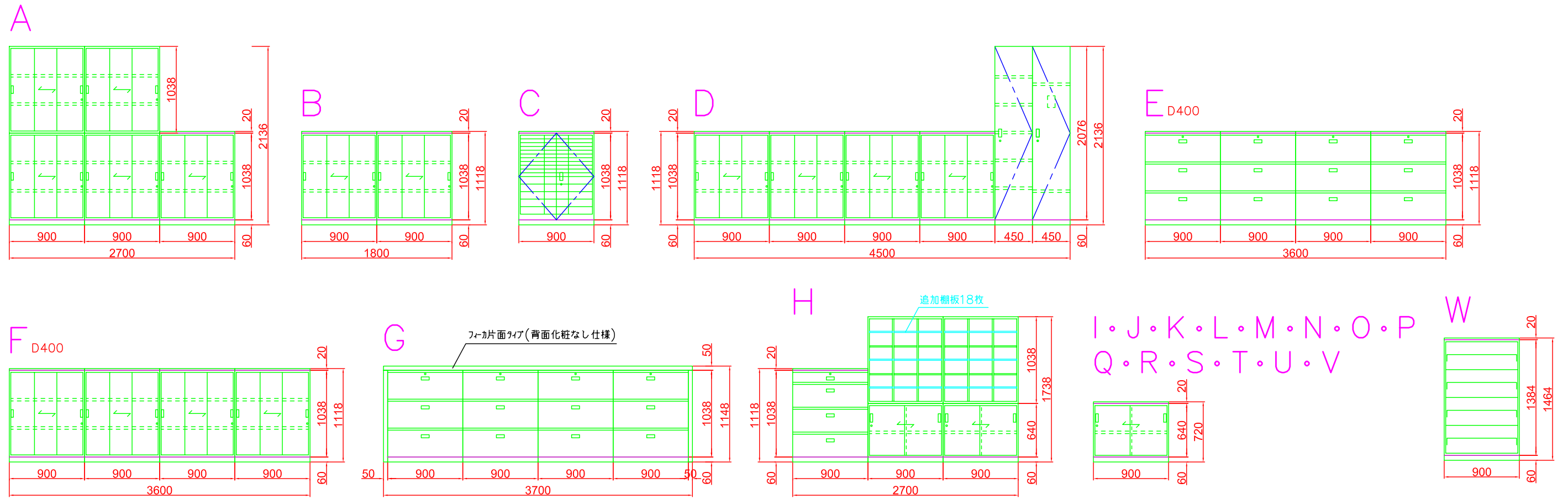
2階平面図・



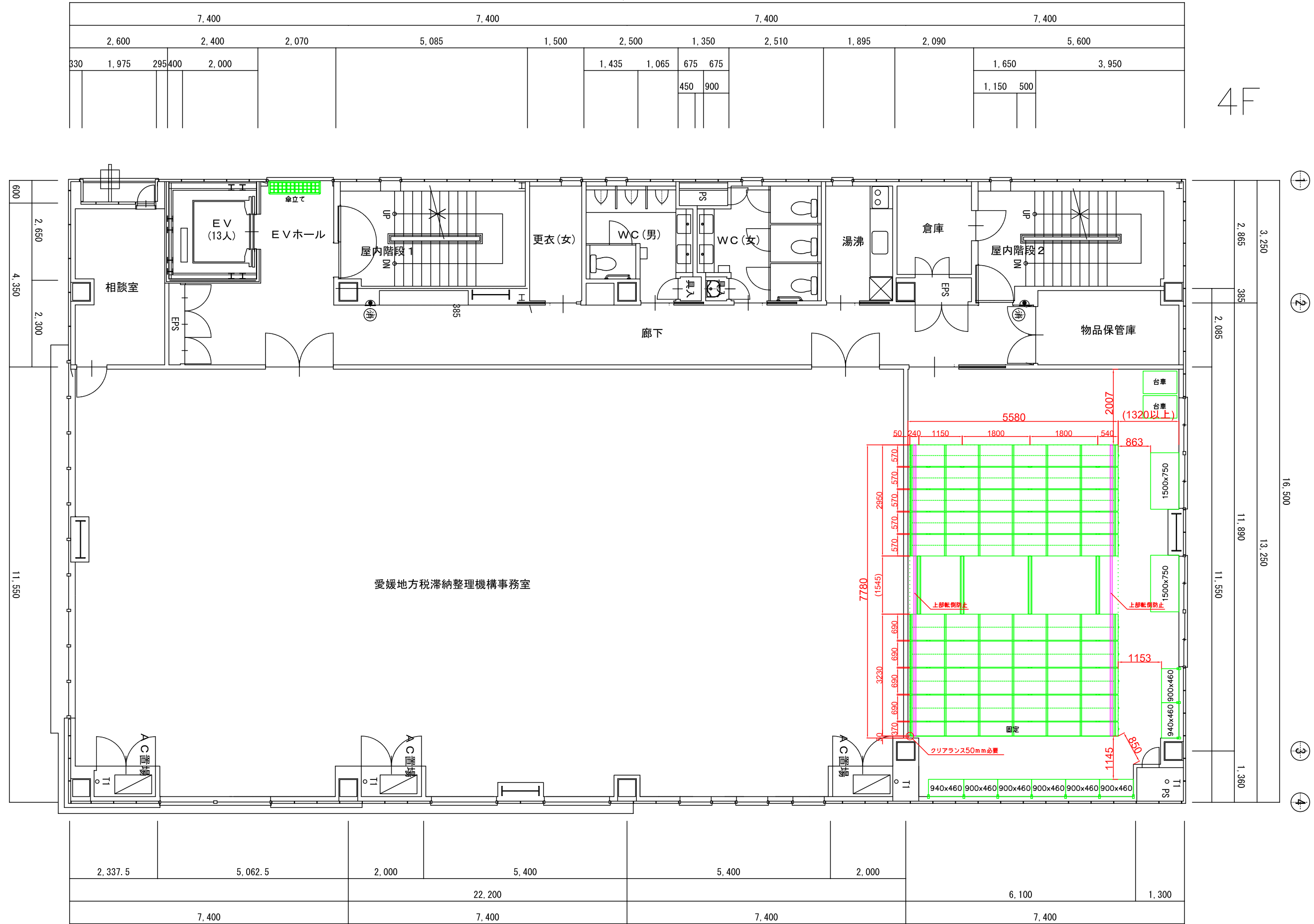
3階平面図・

A3 1/100

# 3F 収納姿図



29,600

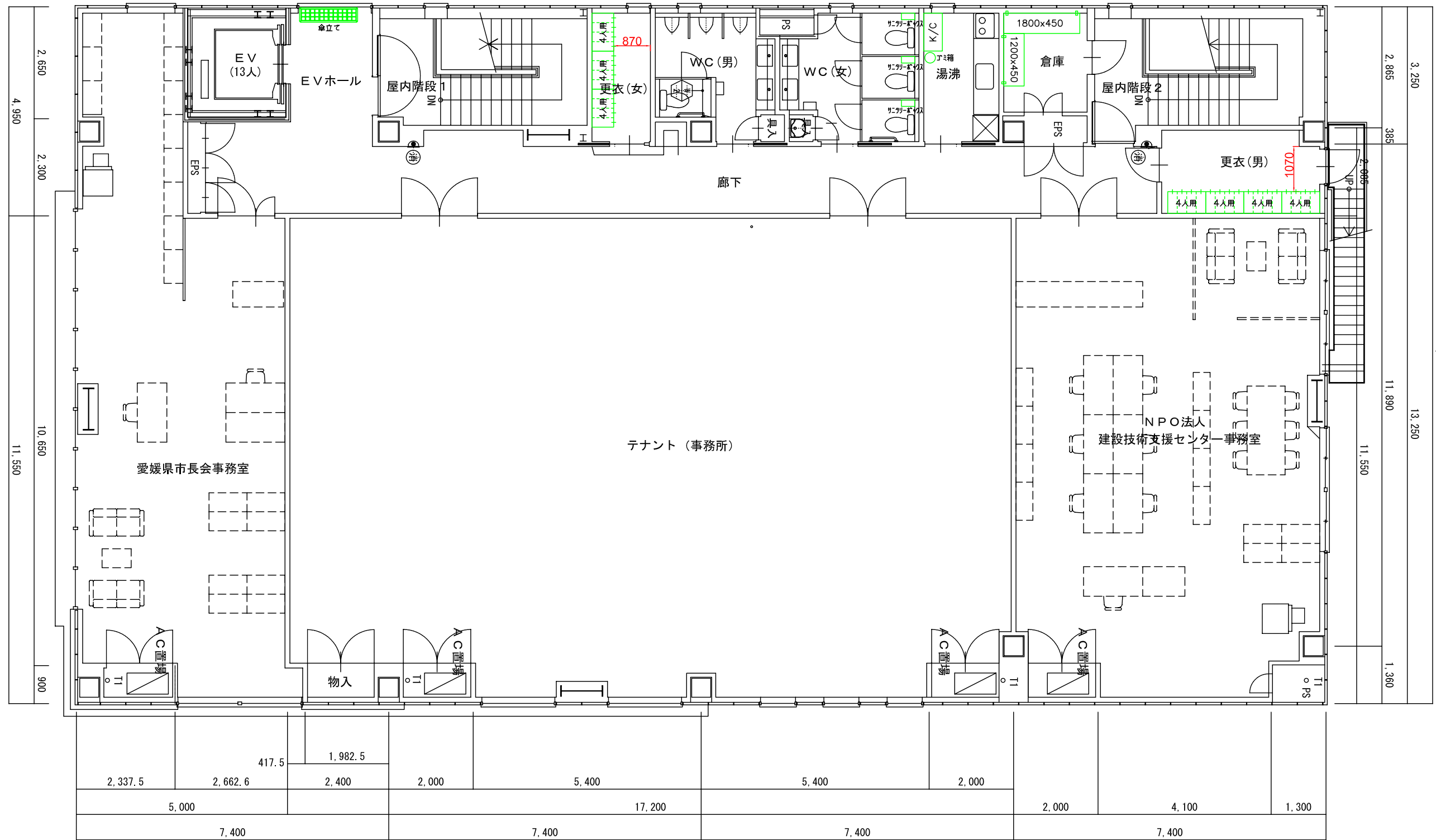


4階平面図・

29,600

7,400			7,400				7,400				7,400					
2,600		2,400	2,070		5,085			1,500	2,500	1,350	2,510		1,895	2,090	5,600	
400	2,000								1,435	1,065	675	675				
											450	900				
												1,650	3,950			
												1,150	500			

5F



5階平面図・